

VALVE DIMENSIONS										VALVE DIMENSIONS									
(METRIC: MM)										(IMPERIAL: INCHES)									
SIZE	A	A	A	B	C	C	C	D	S	SIZE	A	A	A	B	C	C	C	D	S
	*	(SS)	(AB)	*	(SS)	(AB)	(AB)			*	(SS)	(AB)	*	(SS)	(AB)	(AB)	(AB)		
50	223.3	196.3	177	129.3	146.1	119.1	99.8	34	41.4	2	8.79	7.73	6.97	5.09	5.75	4.69	3.93	1.34	1.63
65	241.3	-	196.9	147.6	158.8	-	114.3	34	44.5	2-1/2	9.50	-	7.75	5.81	6.25	-	4.50	1.34	1.75
80	255	213.6	213.6	158.8	165.1	123.7	123.7	34	44.5	3	10.04	8.41	8.41	6.25	6.50	4.87	4.87	1.34	1.75
100	301.8	270	270	198.4	184.2	152.4	152.4	34	50.8	4	11.88	10.63	10.63	7.81	7.25	6.00	6.00	1.34	2.00
125	341.4	-	296.9	222.3	198.9	-	152.4	34	53.8	5	13.44	-	11.69	8.75	7.75	-	6.00	1.34	2.12
150	374.7	326.9	326.9	247.7	212.9	165.1	165.1	34	54.4	6	14.75	12.87	12.87	9.75	8.38	6.50	6.50	1.34	2.14
200	446	412.8	412.8	304.8	244.3	211.1	211.1	47.5	59.7	8	17.56	16.25	16.25	12.00	9.62	8.31	8.31	1.87	2.35
250	517.7	479.6	466.9	368.3	279.4	241.3	228.6	47.5	66.8	10	20.38	18.88	18.38	14.50	11.00	9.50	9.00	1.87	2.63
300	589	545.3	532.6	444.5	317.5	273.8	261.1	47.5	76.2	12	23.19	21.47	20.97	17.50	12.50	10.78	10.28	1.87	3.00

VALVE SIZE	GEAR SIZE	GEAR OPERATOR DIMENSIONS									
		E	F	H	J	GEAR SIZE	E	F	H	J	
2"-6"	GG4 (30:1)	92	105	127	113	GG4 (30:1)	3.63	4.12	5	4.45	
8" & 10"	426 (50:1)	191	326	305	230	426 (50:1)	7.52	12.84	12	9.07	
12"	430 (80:1)	208	286	305	272	430 (80:1)	8.2	11.25	12	10.72	

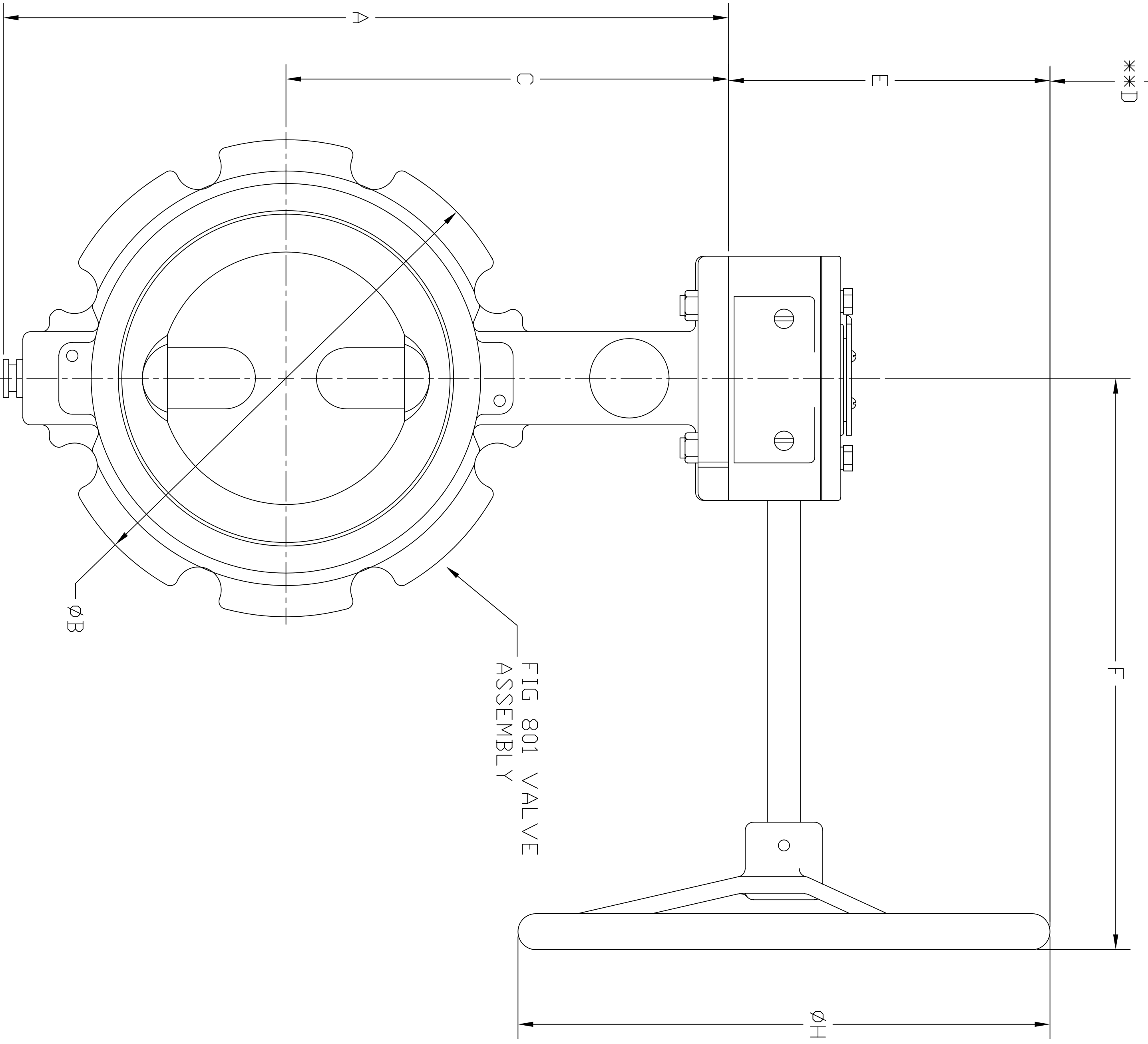
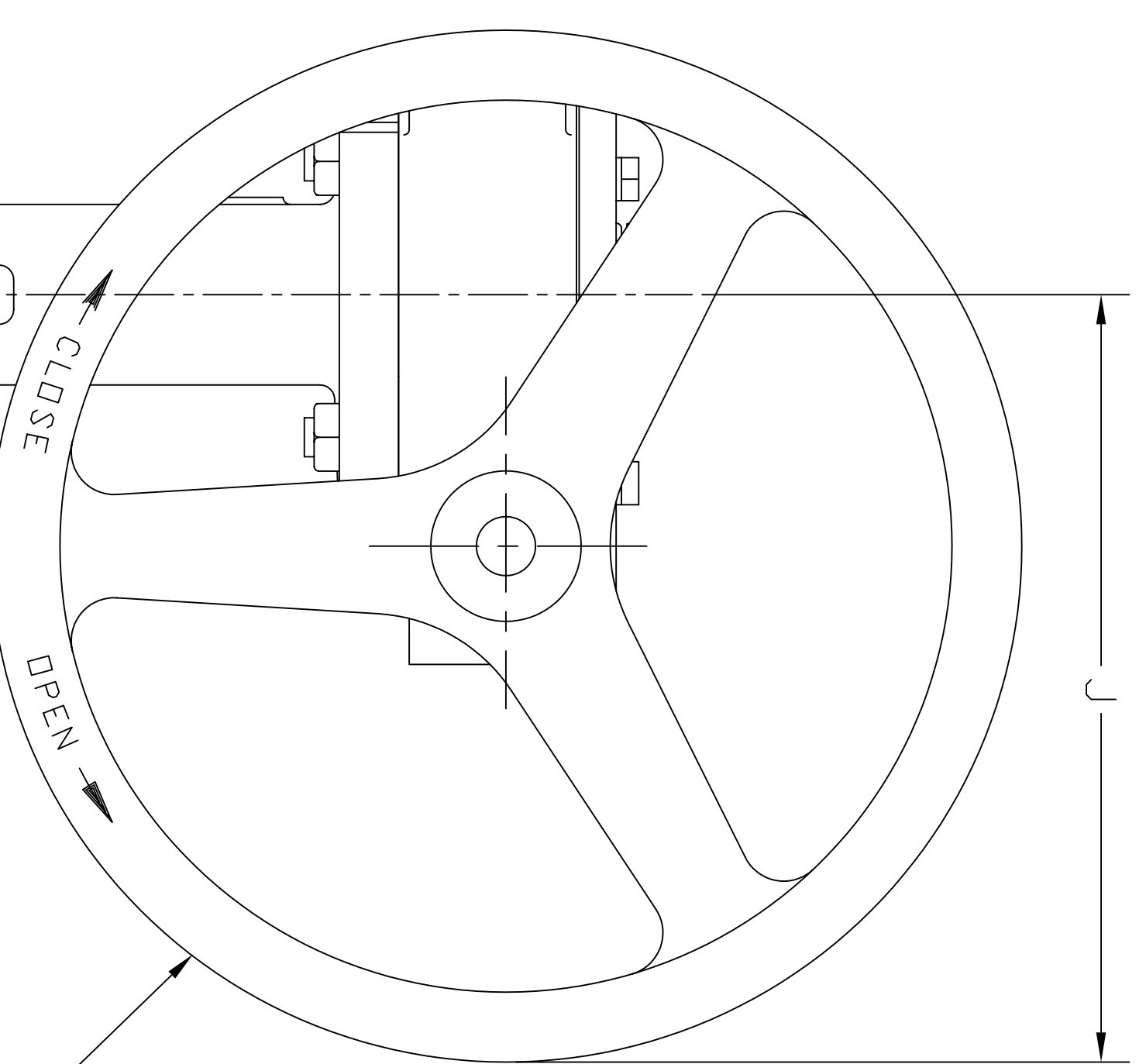


FIG 801 VALVE ASSEMBLY



GEAR OPERATOR WITH HANDWHEEL

NOTES:
 *1. DIMENSIONS APPLY TO CAST IRON AND DUCTILE IRON BODIES ONLY.
 **2. MINIMUM CLEARANCE REQUIRED FOR COVER OR COMPONENT REMOVAL.



Grimmell

FIGURE 801 VALVE ASSEMBLY WITH GEAR OPERATOR 2 INCH THROUGH 12 INCH

SM1254

02 07153	CL	01/19/06	JB	01/19/06
ND	ECN	DRAWN	DATE	CHECK
				DATE
SHEET 1 OF 1				