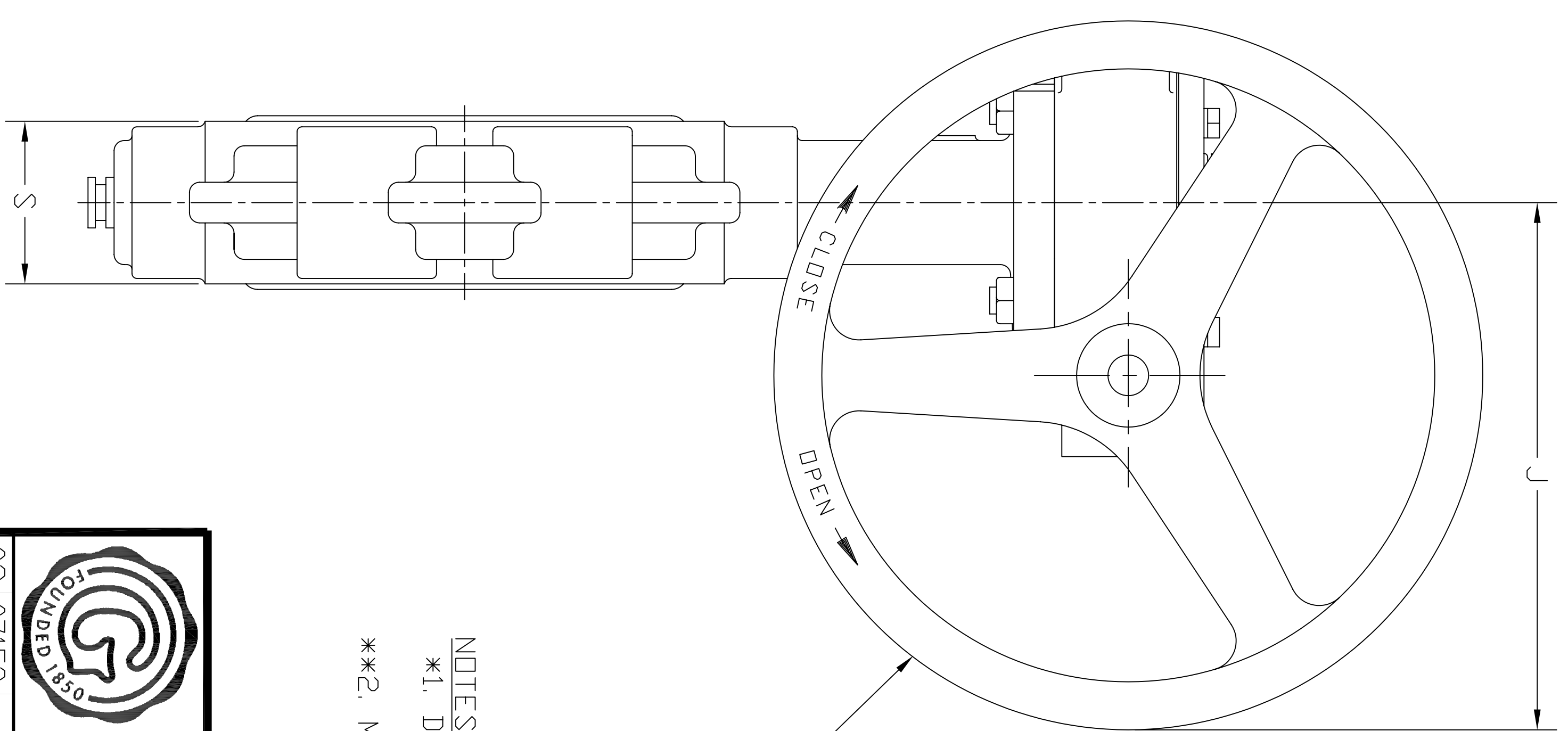
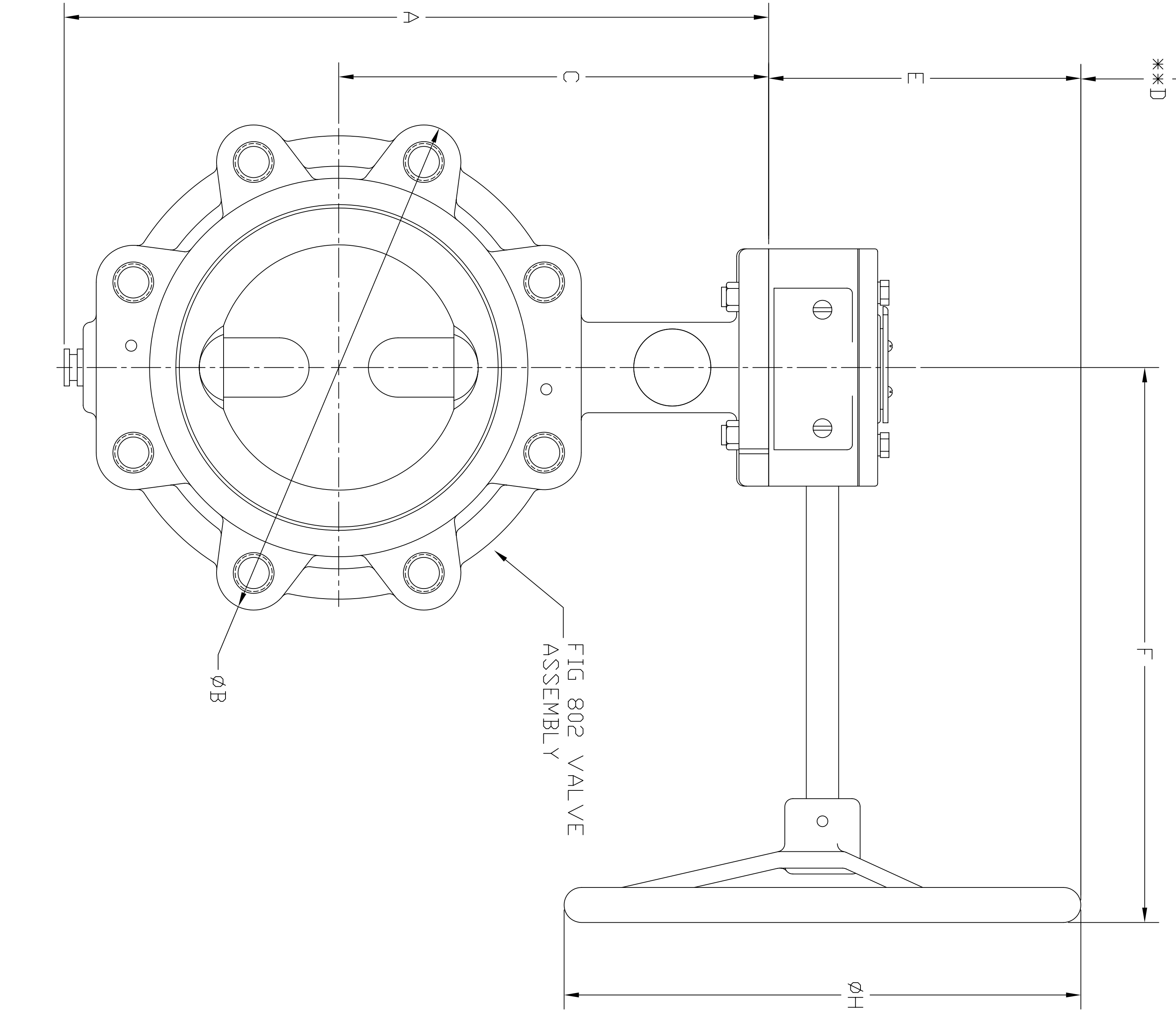


VALVE DIMENSIONS										VALVE DIMENSIONS									
(METRIC: MM)										(IMPERIAL: INCHES)									
SIZE	A	A	B	C	C	D	S	SIZE	A	A	B	C	C	D	S				
	*	(SS)	(AB)	*	(SS)	(AB)		*	(SS)	(AB)	*	(SS)	(AB)						
50	223.3	196.3	177	152.4	146.1	119.1	99.8	34	41.4	2	8.79	7.73	6.97	6.00	5.75	4.69	3.93	1.34	1.63
65	241.3	-	196.9	171.5	158.8	-	114.3	34	44.5	2-1/2	9.50	-	7.75	6.75	6.25	-	4.50	1.34	1.75
80	255	213.6	213.6	184.2	165.1	123.7	123.7	34	44.5	3	10.04	8.41	8.41	7.25	6.50	4.87	4.87	1.34	1.75
100	301.8	270	270	222.3	184.2	152.4	152.4	34	50.8	4	11.88	10.63	10.63	8.75	7.25	6.00	6.00	1.34	2.00
125	341.4	-	296.9	254	198.9	-	152.4	34	53.8	5	13.44	-	11.69	10.00	7.75	-	6.00	1.34	2.12
150	374.7	326.9	326.9	279.4	212.9	165.1	165.1	34	54.4	6	14.75	12.87	12.87	11.00	8.38	6.50	6.50	1.34	2.14
200	446	412.8	412.8	339.7	244.3	211.1	211.1	47.5	59.7	8	17.56	16.25	16.25	13.37	9.62	8.31	8.31	1.87	2.35
250	517.7	479.6	466.9	406.4	279.4	241.3	228.6	47.5	66.8	10	20.38	18.88	18.38	16.00	11.00	9.50	9.00	1.87	2.63
300	589	545.3	532.6	476.3	317.5	273.8	261.1	47.5	76.2	12	23.19	21.47	20.97	18.75	12.50	10.78	10.28	1.87	3.00

VALVE SIZE	GEAR SIZE	GEAR OPERATOR DIMENSIONS							
		E	F	H	J	E	F	H	J
		(METRIC: MM)				(IMPERIAL: INCHES)			
2"-6"	GG4 (30:1)	92	105	127	113	3.63	4.12	5	4.45
8" & 10"	426 (50:1)	191	326	305	230	7.52	12.84	12	9.07
12"	430 (80:1)	208	286	305	272	8.2	11.25	12	10.72



NOTES:
 *1. DIMENSIONS APPLY TO CAST IRON AND DUCTILE IRON BODIES ONLY.
 **2. MINIMUM CLEARANCE REQUIRED FOR COVER OR COMPONENT REMOVAL.

02 07153 CL 01/19/06 JB 01/19/06

ND FCN DRAWN DATE CHECK DATE

Grinnell

FOUNDED 1850

FIGURE 802 VALVE ASSEMBLY WITH GEAR OPERATOR 2 INCH THROUGH 12 INCH

SM1255

SHEET 1 OF 1