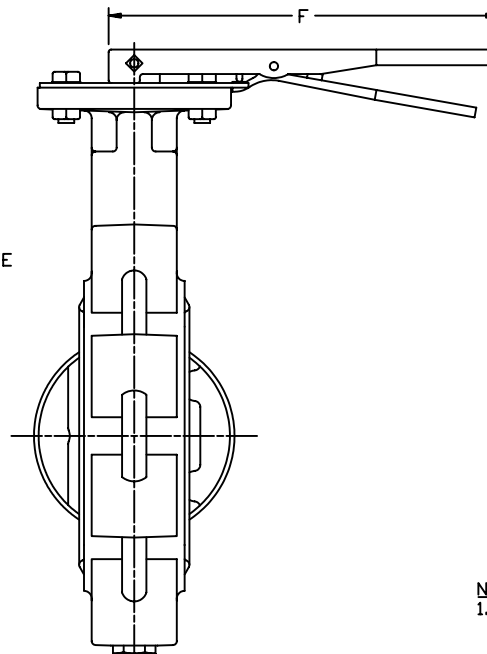
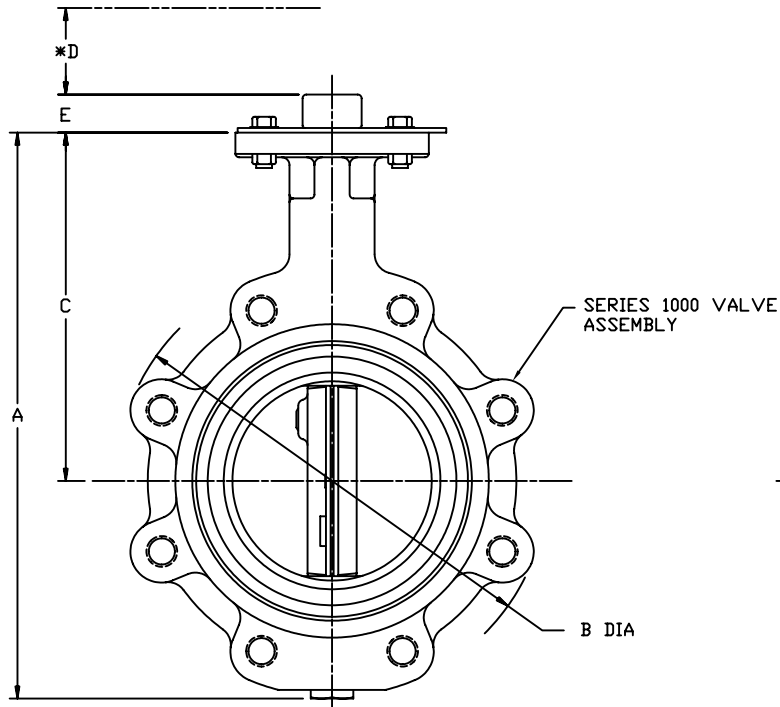



VALVE DIMENSIONS														ADAPT. CODE
(IMPERIAL: INCHES)							(METRIC: MM)							
SIZE	A	B	C	D	E	D	SIZE	A	B	C	D	E	F	
2	8.5	6.03	5.31	1.5	1.5	10.5	50	216	153	135	38	38	267	BAB
2-1/2	9.29	6.78	5.91	1.5	1.5	10.5	65	236	172	150	38	38	267	BAB
3	10.04	7.24	6.3	1.5	1.5	10.5	80	255	184	160	38	38	267	BAB
4	11.34	8.78	7.09	1.5	1.5	10.5	100	288	223	180	38	38	267	BAC
5	12.8	10	7.68	1.5	1.5	10.5	125	325	254	195	38	38	267	BAD
6	13.94	10.98	8.27	1.5	1.5	10.5	150	354	279	210	38	38	267	BAD
8	16.42	13.23	9.45	1.5	1.5	14	200	417	336	240	38	38	356	CAE



- NOTES:**
- REFER TO INDIVIDUAL SMO DRAWINGS FOR FURTHER DETAILS OF VALVE, ACTUATOR AND ADAPTABILITY CODES.
 - * 2. MINIMUM CLEARANCE REQUIRED FOR COVER OR COMPONENT REMOVAL.

 Grinnell	GRINNELL SERIES 1000 LUGGED STYLE VALVE ASSEMBLY WITH HANDLE				
	SM1168				
1	5379	ERW	10/21/98	JS	10/98
NO	ECN	DRAWN	DATE	CHECK	DATE
SHEET 1 OF 1					